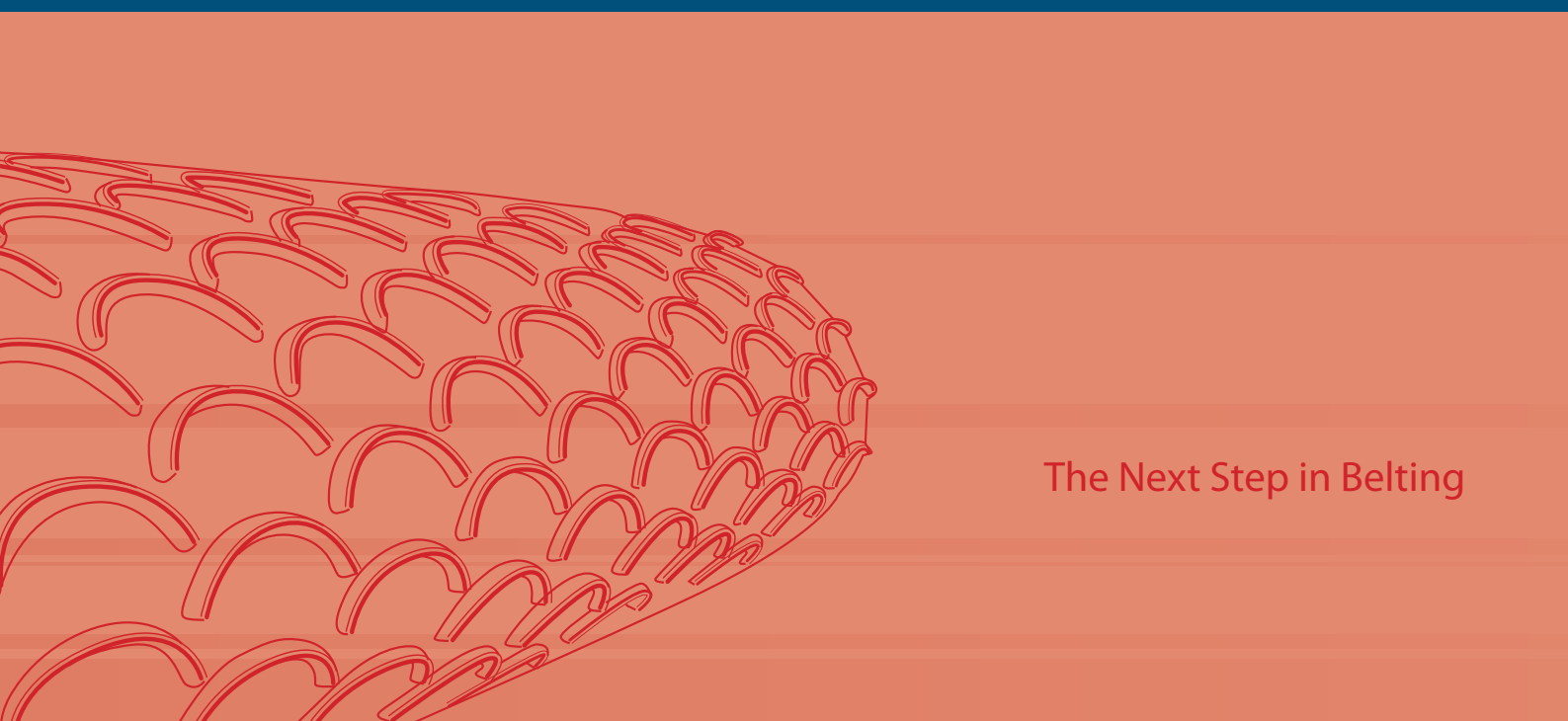
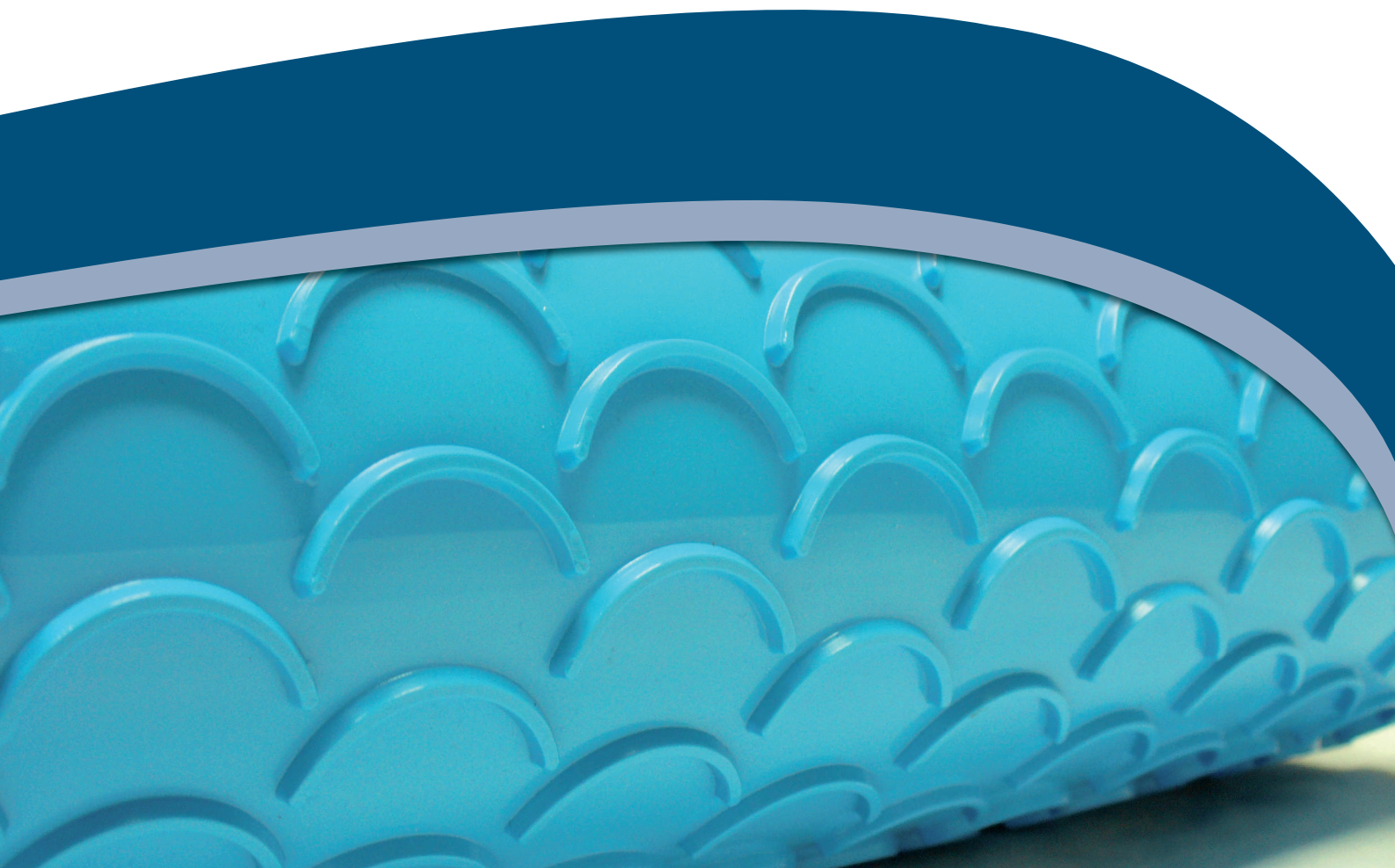




Flat Belts

Crescent Top



The Next Step in Belting

Crescent Top

- High grip of bulky soft products: meat, poultry, fish and seafood
- Applications: slicers, inclined conveyors of bulky or shredded products
- Prevents slipping of conveyed products both backwards and sideways
- Higher product value, less recalls and improved shelf life
- Low costs in water consumption, maintenance and sanitation
- Conversion of cleaning time to production time
- FDA/ USDA/ USDA Dairy Approved
- Declaration of Conformity in compliance with EU Regulations No.: 10/2011, 1935/2004 and Directive 2002/72/EC. Suited to HACCP standards.

Extremely Hygienic and Easy to Clean

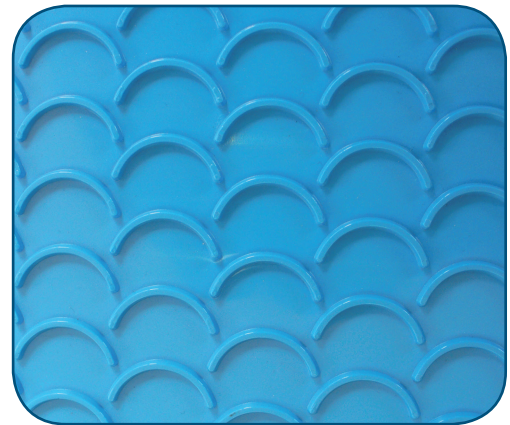
The homogenous material characteristics and smooth operating surfaces ensure an effective and easy cleaning process since the crescent top shape is extruded with the belt and has no fabric layers, ensuring low bacteria counts and eliminating contamination of the conveyed product.

Easily Welded

The belt can be easily welded using Volta FBW Welding Kit. There is no need for time-consuming finger or overlap splicing. The welding is made at an angle retaining the "crescent" shape and eliminates the use of metal fasteners.

Resistant to Water, Oil and Chemicals

The non-porous material provides good resistance to fats and oils and, therefore, does not absorb liquids since there are no fabric layers.



Product	Color	Width	Thickness	Min. Pulley Diameter	Shore Hardness	Temperature Range	Coefficient of Friction (steel)
FELB-3-CT	Blue	1500 mm/ 59"	3 mm	35 mm/ 1 3/8"	80A	-40° ~ 50°C -40° ~ 120°F	0.45
FMB-3-CT		1524 mm/ 60"		60 mm/ 2 3/8"		95A/ 46D	
FEMB-3-CT			0.25				
FEMW-2.5-CT	Beige	1524 mm/ 60"	2.5 mm	50 mm/ 2"	95A/ 46D	-30° ~ 60°C -20° ~ 140°F	0.25



VOLTA Belting Technology Ltd.

**Corporate Headquarters
Sales and Manufacturing**
sales@voltabelting.com

USA
Tel: +1 973 276 7905
Fax: +1 973 276 7908
Toll Free: 1-877-VOLTAUS

EUROPE
Tel: +31-546-580166
Fax: +31-546-579508

www.voltabelting.com