
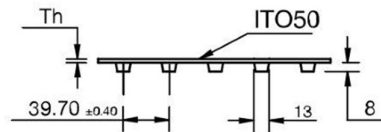
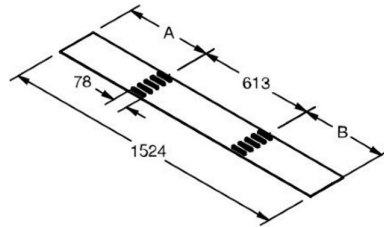


FDR-SD-ITO50 (Hydrolysis & Chemical Resistant SuperDrive™)

Bottom- Smooth, Top-ITO50 (Impression Top Oval)

Material:	Volta DR	
Color (Indicative only)	Blue 15	
Hardness:	53D	
Temp. Range (C°):	-20°C to 70°C	
Temp. Range (F°):	-5°F to 158°F	
Certification:	FDA/ EU Approved	

Coefficient of friction (Dry):	
Steel:	0.55
Stainless Steel:	0.55
UHMW:	0.30



$B=A \pm 5\text{mm}$

Product:	FDR-3-SD-ITO50
Belt Thickness:	3mm
Belt Weight (kg/ m²):	3.5 kg/m ²
Add for each row of teeth	+0.180 Kg/m
Belt Weight (lb/ ft²):	0.71 lb/ft ²
Add for each row of teeth	+0.121 lb/ft
Belt Min Pulley Diameter (mm) (Normal Flex)	80mm
Belt Min Pulley Diameter (mm) (Back Flex)	100mm
Belt Min Pulley Diameter (Inch) (Normal Flex)	3.15"
Belt Min Pulley Diameter (Inch) (Back Flex)	3.94"
Max Pull Force* (kg/cm width)	4.7
Max Pull Force* (lb/inch width)	26.3

*Pull force – According to “Temperature Correction Factor”.

Belt material	Temperature Correction Factor						
	40°C/ 104°F	45°C/ 113°F	50°C/ 122°F	55°C/ 131°F	60°C/ 140°F	65°C/ 149°F	70°C/ 158°F
DR – 53D Shore	0.87	0.82	0.78	0.7	0.6	0.55	0.48

- English dimensions have been converted from Metric measurements.
- All values are nominated and to the best of our experience are true and accurate.