
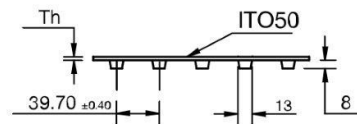
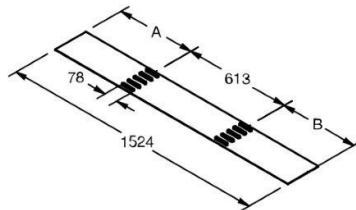


**FEDR-SD-ITO50 (Hydrolysis & Chemical Resistant SuperDrive™)**

**Bottom- Embossed, Top- ITO50 (Impression Top Oval)**

Material:	Volta DR		Coefficient of friction Embossed Bottom (Dry):	
Color (Indicative only)	Blue 15		Steel:	0.38
Hardness:	53D		Stainless Steel:	0.38
Temp. Range (C°):	-20°C to 70°C		UHMW:	0.22
Temp. Range (F°):	-5°F to 158°F			
Certification:	FDA/EU Approved			



B=A±5mm

<b>Product:</b>	<b>FEDR-3-SD-ITO50</b>
<b>Belt Thickness:</b>	3mm
<b>Belt Weight (kg/ m<sup>2</sup>):</b>	3.5 kg/m <sup>2</sup>
<b>Add for each row of teeth</b>	+0.180 Kg/m
<b>Belt Weight (lb/ ft<sup>2</sup>):</b>	0.74 lb/ft <sup>2</sup>
<b>Add for each row of teeth</b>	+0.121 lb/ft
<b>Belt Min Pulley Diameter (mm) (Normal Flex)</b>	80mm
<b>Belt Min Pulley Diameter (mm) (Back Flex)</b>	100mm
<b>Belt Min Pulley Diameter (Inch) (Normal Flex)</b>	3.15"
<b>Belt Min Pulley Diameter (Inch) (Back Flex)</b>	3.94"
<b>Max Pull Force* (kg/cm width)</b>	4.7
<b>Max Pull Force* (lb/inch width)</b>	26.3

Belt material	Temperature Correction Factor						
	40°C/ 104°F	45°C/ 113°F	50°C/ 122°F	55°C/ 131°F	60°C/ 140°F	65°C/ 149°F	70°C/ 158°F
DR – 53D Shore	0.87	0.82	0.78	0.7	0.6	0.55	0.48

- \*Pull force – According to “Temperature Correction Factor”.
- English dimensions have been converted from Metric measurements.
- All values are nominated and to the best of our experience are true and accurate.