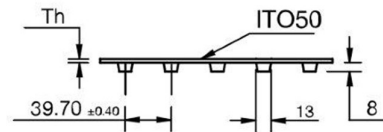
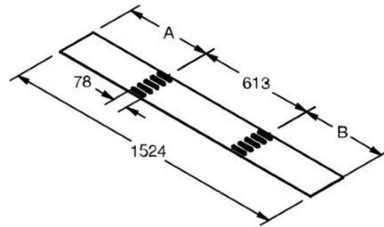


FHW-SD-ITO50

SuperDrive™, Bottom- Smooth, Top-ITO50(Impression Top Oval)

Material:	Volta HW
Color (Indicative only)	Off-White
Hardness:	55D
Temp. Range (C°):	-20°C to 90°C
Temp. Range (F°):	-5°F to 194°F
Certification:	FDA/USDA/USDA Dairy /EU Approved

Coefficient of friction (Dry):	
Steel:	0.4
Stainless Steel:	0.4
UHMW:	0.2



$B=A \pm 5mm$

Product:		FHW-3-SD-ITO50	FHW-4-SD-ITO50
Belt Thickness:		3mm	4mm
Belt Weight (kg/ m²):		3.6 kg/m ²	4.5 kg/m ²
Add for each row of teeth		+0.180 Kg/m	+0.180 Kg/m
Belt Weight (lb/ ft²):		0.74 lb/ft ²	0.92 lb/ft ²
Add for each row of teeth		+0.121 lb/ft	+0.121 lb/ft
Belt Min Pulley Diameter (mm) (Normal Flex)	Temp ≥ 0°C/32°F	176mm	126mm
	Temp < 0°C/32°F	210mm	150mm
Belt Min Pulley Diameter (mm) (Back Flex)	Temp ≥ 0°C/32°F	264mm	189mm
	Temp < 0°C/32°F	315mm	225mm
Belt Min Pulley Diameter (Inch) (Normal Flex)	Temp ≥ 0°C/32°F	6.93"	4.96"
	Temp < 0°C/32°F	8.27"	5.9"
Belt Min Pulley Diameter (Inch) (Back Flex)	Temp ≥ 0°C/32°F	10.39"	7.44"
	Temp < 0°C/32°F	12.4"	8.86"
Max Pull Force* (kg/cm width)		7	9
Max Pull Force* (lb/inch width)		39.20	50.40

- *Pull force – According to “Temperature Correction Factor”.

Belt material	Temperature Correction Factor										
	40°C/ 104°F	45°C/ 113°F	50°C/ 122°F	55°C/ 131°F	60°C/ 140°F	65°C/ 149°F	70°C/ 158°F	75°C/ 167°F	80°C/ 176°F	85°C/ 185°F	90°C/ 194°F
H-55D Shore	1	0.98	0.95	0.9	0.87	0.8	0.7	0.68	0.66	0.63	0.6

- English dimensions have been converted from Metric measurements.
- All values are nominated and to the best of our experience are true and accurate.