
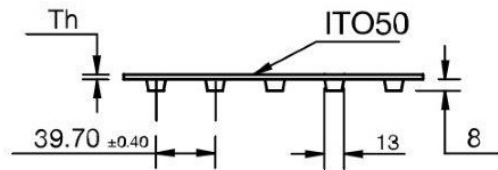
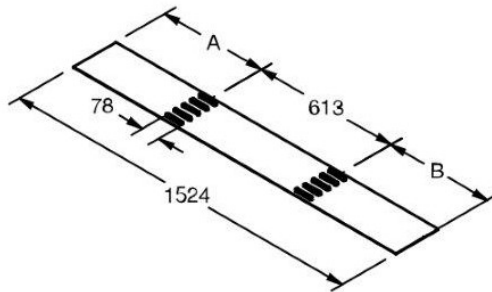


FMB-SD-ITO50-MD (Metal Detectable)
SuperDrive™, Top-Impression Top Oval -ITO50

Material:	Volta MB-MD	
Color (Indicative only)	Blue 09	
Hardness:	53D	
Temp. Range (C°):	-20°C to 60°C	
Temp. Range (F°):	-5°F to 140°F	
Certification:	FDA/ EU Approved	

Coefficient of friction (Dry):	
Steel:	0.5
Stainless Steel:	0.5
UHMW:	0.28



$B=A \pm 5\text{mm}$

Product:	FMB-3-SD-ITO50-MD
Belt Thickness:	3mm
Belt Weight (kg/ m²):	3.64kg/m ²
Add for each row of teeth	+0.1875 Kg/m
Belt Weight (lb/ ft²):	0.75 lb/ft ²
Add for each row of teeth	+0.126 lb/ft
Belt Min Pulley Diameter (mm) (Normal Flex)	100mm
Belt Min Pulley Diameter (mm) (Back Flex)	110mm
Belt Min Pulley Diameter (Inch) (Normal Flex)	3.94"
Belt Min Pulley Diameter (Inch) (Back Flex)	4.33"
Max Pull Force (kg/cm width)	6
Max Pull Force (lb/inch width)	33.60

- English dimensions have been converted from Metric measurements.
- All values are nominated and to the best of our experience are true and accurate.
- For endless welding use the Volta FBW welding system.

Disclaimer: Volta Belting Ltd. recommends testing all the products in your environment to ascertain suitability. The information is supplied in good faith without warranty.