
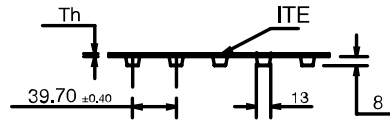
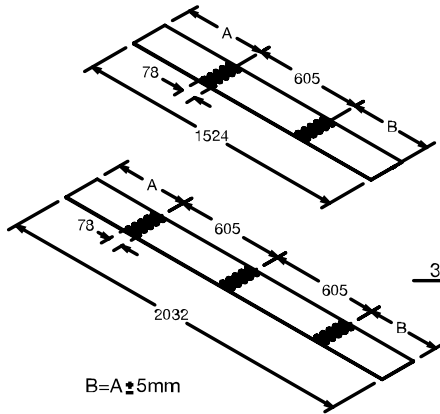


FHB-SD-ITE

SuperDrive™, Bottom- Smooth, Top-ITE (Impression Top Embossed)

Material:	Volta HB	
Color (Indicative only)	Blue 16	
Hardness:	55D	
Temp. Range (C°):	-20°C to 90°C	
Temp. Range (F°):	-5°F to 194°F	
Certification:	FDA/USDA/USDA Dairy /EU Approved	

Coefficient of friction (Dry):	
Steel:	0.4
Stainless Steel:	0.4
UHMW:	0.2



Product:	FHB-3-SD-ITE	
Belt Thickness:	3mm	
Belt Weight (kg/ m²):	3.6 kg/m ²	
Add for each row of teeth	+0.180 Kg/m	
Belt Weight (lb/ ft²):	0.74 lb/ft ²	
Add for each row of teeth	+0.121 lb/ft	
Belt Min Pulley Diameter (mm) (Normal Flex)	Temp ≥ 0°C/32°F	126mm
	Temp < 0°C/32°F	150mm
Belt Min Pulley Diameter (mm) (Back Flex)	Temp ≥ 0°C/32°F	189mm
	Temp < 0°C/32°F	225mm
Belt Min Pulley Diameter (Inch) (Normal Flex)	Temp ≥ 0°C/32°F	4.96"
	Temp < 0°C/32°F	5.9"
Belt Min Pulley Diameter (Inch) (Back Flex)	Temp ≥ 0°C/32°F	7.44"
	Temp < 0°C/32°F	8.86"
Max Pull Force* (kg/cm width)	7	
Max Pull Force* (lb/inch width)	39.20	

- *Pull force – According to “Temperature Correction Factor”.

Belt material	Temperature Correction Factor													
	30°C/ 86°F	40°C/ 104°F	45°C/ 113°F	50°C/ 122°F	55°C/ 131°F	60°C/ 140°F	65°C/ 149°F	70°C/ 158°F	75°C/ 167°F	80°C/ 176°F	85°C/ 185°F	90°C/ 194°F	95°C/ 203°F	100°C/ 212°F
H-55D Shore	1	1	0.95	0.87	0.85	0.80	0.75	0.67	0.64	0.61	0.57	0.53	0.47	0.44

- English dimensions have been converted from Metric measurements.
- All values are nominated and to the best of our experience are true and accurate.

FHB/FHW & FEHB -SD

PULLEY GUIDELINES & FABRICATION OPTIONS

Belt Type	FHB/FHW-SD, FHB-SD-ITE, FHB-SD-ITO50, FEHB-SD-ITM2		FHW/FHB-SD, FHB-SD-ITO50, FEHB-ITM2-SD	
Belt Thickness	3mm		4mm	
Temperature	Temp ≥ 0° C / 32° F	Temp < 0° C / 32° F	Temp ≥ 0° C / 32° F	Temp < 0° C / 32° F
MPD Base Belt	126mm/4.96"	150mm/5.9"	176mm/6.93"	210mm/8.27"
Minimum Pulley Diameter for V-Flights				
Electrode	158mm/ 6.22"	182mm/ 7.16"	191mm/ 7.52"	225mm/ 8.85"
VW/VWB 10	183mm/ 7.20"	207mm/ 8.15"	211mm/ 8.30"	245mm/ 9.64"
VW/VWB 13	203mm/ 7.99"	227mm/ 8.93"	236mm/ 9.29"	270mm/ 10.62"
VW/VWB 17	243mm/ 9.56"	267mm/ 10.51"	276mm/ 10.86"	310mm/ 12.2"
Minimum Pulley Diameter for Electrode Welded Flights				
Single Electrode 7	183mm/ 7.20"	207mm/ 8.15"	216mm/ 8.50"	250mm/ 9.84"
Single Electrode 9	203mm/ 7.99"	227mm/ 8.93"	236mm/ 9.29"	270mm/ 10.62"
Double Electrode 7	218mm/ 8.58"	242mm/ 9.52"	251mm/ 9.88"	285mm/ 11.22"
Double Electrode 9	NR		NR	

- **NR:** Not Recommended.
- Flights should be welded between teeth and not in the area where pulley teeth make contact with the belt when driving it.
- When choosing the pulley size, it must be equal to or larger than the minimum pulley required.