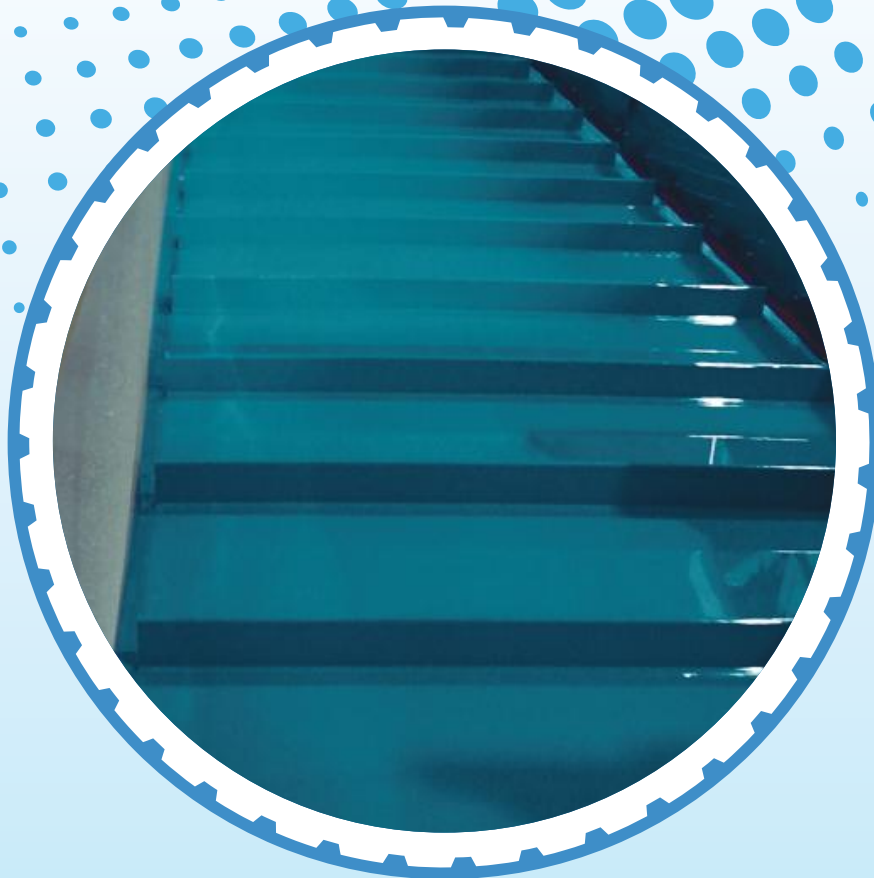




The Next Step  
in **Belting**



# Metal Detectable Flat Belts

Conveying Solutions

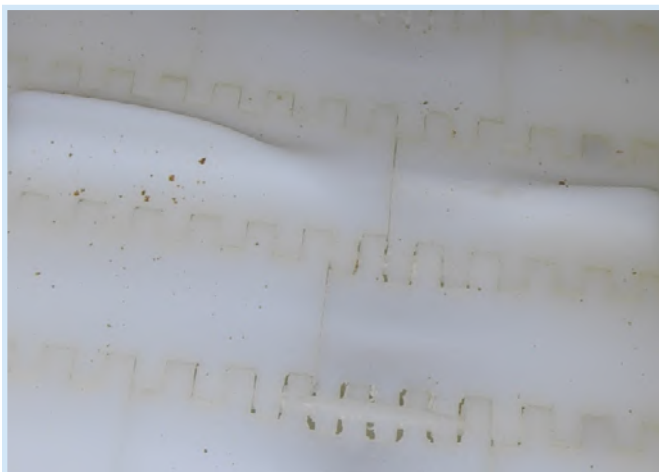
# Metal Detectable (MD) Volta belts for the food industry

As you are aware, consumer safety has become a prominent issue in recent years due to heightened public awareness, increasingly stringent legal regulations, and the challenging responsibility of managing an automated food processing line. The ever-changing demands and pressures for superior food safety are driven internally by managers along with external pressures from consumers, industry regulators, and global associations.

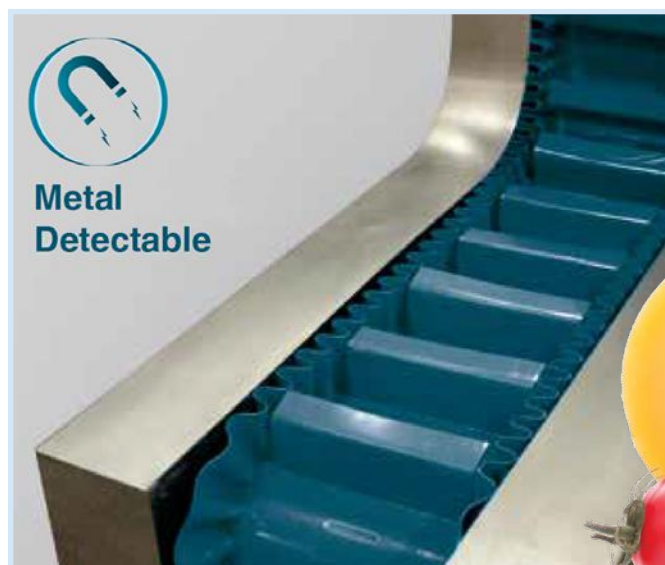
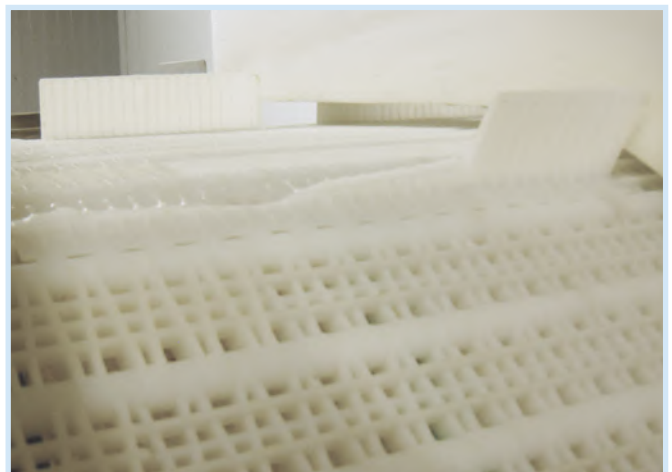
Often called “farm to fork”, the path from raw food to a finished and packaged product is one that has hazardous contact points. Before consumers have their food on their tables, that food has come into contact with harvesting equipment, slaughterhouses, freezers, cold storages, a wide array of transportation means, and various processing machinery. Although most contaminants (much of which is ferrous) are removed in early processing stages, trace contaminants can still remain in foods. Thus, metal detection is often used as a last line of defense in most processing facilities.

Food routinely makes contact with conveyor belting and with the widespread use of fragile modular belting, concerns arise over plastic contaminants being deposited into the flow of food due to wear and tear. Volta firmly stands behind the safety and stability of all Volta food grade belts as a solution for alternative inferior belting types. Our ultimate goal is to eliminate any concerns and fears held by processors and consumers regarding food safety.

Abraded by Frozen Food



Broken cleats/flights



Metal detectable plastic is an important necessity to all types of food processors. Many would never consider allowing pens, electric ties, and plasters within the hygienic zone if they were not detectable.

While Volta Belting’s materials are resistant to cuts and breakage, food grade metal detectable belts have been developed to meet high demands and to give quality assurance and production teams the confidence in knowing that their products will meet the strictest food safety requirements.

Detectability is determined by contaminant type, size, the size of the detector’s aperture, the orientation of the detectable material, and the frequency at which the detector is calibrated. Small particles may pass undetected if the food product has a similar phase angle to the contaminant (dry and moist products produce different signals), or if the particle passes through the center of a sufficiently large detector.

Metal Detectable (MD) Positive Drive Belts												
Product & Color		Shore Hardness	Temperature Range	CoF UHMW (bottom)	Thickness		Minimum Pulley Diameter		Maximum Pull Force		Certifications	
					mm		mm	Inch	kg/cm	lbs/in		
SuperDrive™ Metal & Detectable Belt												
FMB-SD-MD	Blue 09		53D	-20°C to 60°C -5°F to 140°F	0.28	3		100	4	6	33.6	FDA/EU
FMB-SD-ITO50-MD	Blue 09		53D	-20°C to 60°C -5°F to 140°F	0.28	3		100	4	6	33.6	FDA/EU
DualDrive™ Metal Detectable Belt												
FMB-DD-MD	Blue 09		53D	-20°C to 60°C -5°F to 140°F	0.28	3		100	4	6	33.6	FDA/EU

Metal Detectable (MD) Food Conveying Belts												
Product & Color		Shore Hardness	Temperature Range	CoF UHMW (bottom)	Thickness		Minimum Pulley Diameter		Pull Force: Pretension 1%		Certifications	
					mm		mm	Inch	kg/cm	lbs/in		
Flat, Homogeneous Metal Detectable Belts												
FMB-MD	Blue 09		95A	-20°C to 60°C -5°F to 140°F	0.28	3		75	3	1.80	10.1	FDA/EU
Flat, Homogeneous Embossed Bottom Metal Detectable Belts												
FEMB-MD	Blue 09		95A	-20°C to 60°C -5°F to 140°F	0.20	2		50	2	0.80	4.5	FDA/EU
						3		75	3	1.20	6.8	
Flat, Homogeneous Impression Top Metal Detectable Belts												
FEMB-ITO50-MD	Blue 09		95A	-20°C to 60°C -5°F to 140°F	0.20	2		50	2	0.60	3.36	FDA/EU
						3		75	3	1	5.6	
FEMB-CT-MD	Blue 09		95A	-20°C to 60°C -5°F to 140°F	0.20	3		95	3 <sup>3</sup> / <sub>16</sub>	1.2	6.75	

## Guidelines and Suggested Materials for the Fabrication of Metal Detectable (MD) belts:

The Metal Detectable material (MD) should be treated as a separate family of materials in terms of fabrications.

- ✓ **Sidewalls:** It is possible to weld Sidewalls from MD material (FMB-MD) with a thickness of 2mm only.
- ✓ **Flights:** It is recommended to use MD material for flights – FMB-MD.
- ✓ **Guides:** Use the VLB-MD guide for the Metal Detectable belts.
- ✓ **Electrodes:** Use EVMB-MD electrode.
- ✓ **RoundFlex™ Lace:** Item code LMD-R
- ✓ **Endless Closure of Belts:** Volta recommends joining the Metal Detectable (MD) Positive Drive belts with a butt weld using an FBW Tool.

