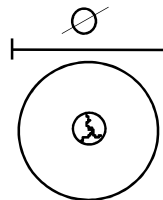


**ROS** Round Reinforced Profile

Material:	<b>Volta O,Orange</b>
Hardness:	83A
Temp. Range:	- 40 °C to +55 °C
Certification:	FDA/EU

Coefficient of friction :	
Steel:	0.55
Aluminum:	0.55
Rubber:	0.65



**ROS**

BELT TYPE	DIAMETER Ø mm	WEIGHT kg/m	MIN. PULLEY Ø mm	MAX. WORK LOAD kg	PULL FORCE (kg) AT PRETENSION			DRILL BIT
					0.3 %	0.5%	0.7 %	
ROS-1/4 (6.3)	6.3	0.04	42	5	4.5	NR	NR	I
ROS-5/16 (8)	8	0.06	54	8.2	5	7.7	NR	I
ROS-3/8 (9.5)	9.5	0.09	64	11.8	9.5	15.8	NR	I
ROS-1/2 (12.5)	12.5	0.15	86	21.0	11.4	19	NR	II
ROS-9/16 (14)	14	0.20	95	26.0	12.3	20.9	25	II
ROS-5/8 (16)	15.9	0.23	108	32.7	13.6	22	31.8	II
ROS-3/4 (19)	19	0.34	127	47.7	15	25	34.5	II

**Notes:**

1. Pull Force in tables relate to grooved steel, aluminum and Cast Iron pulleys. Multiply given values by 0.7 for wet pulleys.
2. Dimensions have been converted from inch measurements.
3. All values are nominal and to the best of our experience are true and accurate.
4. NR = Not Recommended.